

Calibration Fixture for calibrating all types of qPCR Real Time Cyclers

Upgrade release July, 2011

DRIFTCON[®] FFC systems

- Full Flat cable system to calibrate closed qPCR systems
- Electronics are partly incorporated into a qPCR microtiter plate 96 well format
- 4 types of exit cable available
- Compatible to all type of Real Time PCR block cyclers
- Also available in "all well" versions
- Can be used with current Driftcon hardware and software version 1.3.1.1 or higher (free downloads)
- Extra robust upgraded design and layout
- Dynamic, accurate, multichannel and fully traceable
- Software includes ACP technology. (advanced control positioner) In simple words "where to position your neg and positive control" base on cycler performance



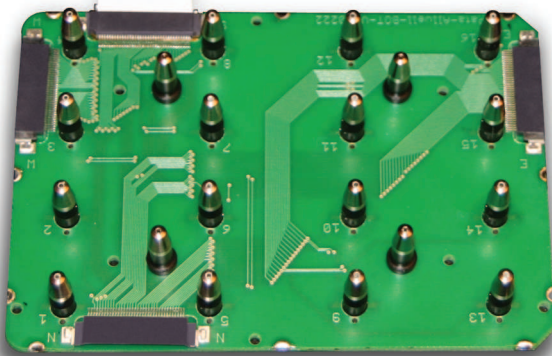
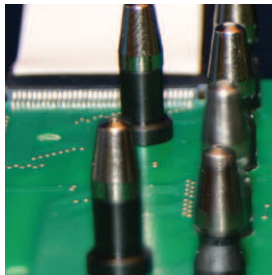
N E W



DRIFTCON[®] FFC

The Driftcon[®] FFC fixture consists of a so-called "probe fixture FFC", a robust construction in which the thermistors are positioned in a holder, which has (q)PCR plate dimensions. The fixture contains processing electronics and calibration values. This **new** Driftcon[®] FFC fixture is **replacing** the "old type" FFC Driftcon range of fixtures.

FFC fixtures are used in closed (q)PCR systems using low and/or regular profile plate formats. Acquisition and analyses are performed by the use of the Driftcon software. The required software version for using these new Driftcon FFC fixture is 1.3.1.1. or higher The software of free downloadable from the Driftcon website.



The new extra robust Driftcon FFC fixture

Ordering Information

Order#
DSY0202 Driftcon® FFC system 96-15 LP H(2-3) exit,
 For use with Biorad, Eppendorf EP, ABI 7300 and 7500 (fast) cyclers

DSY0222 Driftcon® FFC system 96-16 All Well LP G(2-3) exit
 For use with Biorad, Eppendorf EP, ABI 7300 and 7500 (fast) cyclers

Additional to order accessories for measuring:

Biorad iQ no additional accessories required
 Eppendorf EP no additional accessories required
 ABI-7500/7300 #FFC0012_Rev1 (refurbished) ABI FFC 96 adaptor 7500/7300

Order#
DSY0200 Driftcon® FFC system 96-15 LP (E-G)12) exit
 For use with Biorad CFX cycler and LightCycler® 480 systems

DSY0220 Driftcon® FFC system 96-16 LP All Well (D-F)11 exit

Additional to order accessories for measuring:

Roche LightCycler® 480 systems qPCR #FFC0011_Rev1(refurbished) Roche LightCycler® 480 FFC 96-15 adaptor qPCR

Order#
DSY0201 Driftcon® FFC fixture 96-15 LP A(2-3) exit
 For use with ABI 7900 (fast) cyclers

DSY0221 Driftcon® FFC system 96-16 LP All Well A(2-3) exit
 For use with ABI 7900 (fast) cyclers

Additional to order accessories for measuring:

ABI7900 #FFC0014 rev1 (refurbished)
 ABI FFC 96 adaptor 7900 insert

All fixtures are available. Recalibration annually.
 Calibration uncertainty 0.13°C (k=2)
 Comes fully ISO17025 calibrated

Exchange Upgrade Program

“old type” Driftcon® FFC fixtures can be upgraded to the **“new type”** fixture at the moment it comes in for recalibration. You will receive “as found” values from the “old fixture” and “as left” values from the “new fixture”. Calibration costs remains the same. Please make sure that you include your “old FFC adaptor” as they will also be upgraded to optimize the new fixture fit. Contact your local distributor for details and upgrade costs.

Driftcon® FFC. End-user calibration product.

The use of Driftcon is recommended weekly or monthly or annually

- o Calibrations are performed dynamically
- o Measurements on all (q)PCR cyclers
- o Measurements are related to the ITS-90 Scale
- o Systems are ISO17025 calibrated
- o Accuracy is better than ±0.20°C over a range of 10 - 100°C
- o Measurement range 10-100°C
- o Measurements of 15 or 16 channels simultaneously (2 Hz/channel)
- o Retrospective analysis, and movie player in place
- o ACP technology in place. (advanced control positioner)
- o Reports: dynamics of drift, uniformity, accuracy, heat rate, cool rate, plateau time
- o Certified ISO17025 calibrated System
- o Access to global user database to validate your cycler
- o Cycler to cycler protocol transition tool
- o Conform ISO GMP, GLP, CAP, ASHI governmental and association regulations
- o Recalibration annually

Warranty:

Driftcon® FFC systems are high precision instruments and fixtures are designed for use in specific and designated Cyclers

your local distributor



Headquarters
 CYCLERtest BV
 Rötischerweg 61, Entrance C
 6374 XW Landgraaf
 The Netherlands

Phone: +31+(0)45 533 87 33
 Fax: +31+(0)45 533 87 94
 Website: www.cyclertest.com - www.driftcon.com
 E-mail: support@cyclertest.com
 E-mail: support@driftcon.com

Trademarks: CYCLERtest is a trademark of CYCLERtest BV, The Netherlands.
 GENO-tronics, DRIFTCON and DRIFTCON-RF, Driftcon FFC, MTAS, MTAS FFC are trademarks of GENO-tronics, BV The Netherlands.
 © Copyright CYCLERtest 07-2011. All rights reserved

Compatibility Chart



FFC fixtures 96-15 and 96-16

for calibrating 96 wells
0.2 ml and 0.1 ml block format qPCR cyclers

Cycler brand	Cycler Model	format	*FFC200 E	*FFC201 N	*FFC202 S	*FFC203 W	*FFC220 E All Well	*FFC220 N All Well	*FFC220 S All Well	*FFC220 W All Well	Adaptor required
Abbott	m2000rt	96 x 0.2ml			✓				✓		✓
Applied Biosystems	7300 Real-Time PCR System	96 x 0.2ml			✓				✓		✓
Applied Biosystems	7500 Fast Real-Time PCR System	96 x 0.2ml Fast			✓				✓		✓
Applied Biosystems	7500 Real-Time PCR System	96 x 0.2ml Std			✓				✓		✓
Applied Biosystems	7900HT Fast Real-Time PCR System	96 x 0.2ml Fast		✓				✓			✓
Applied Biosystems	7900HT Real-Time PCR System	384-well									
Applied Biosystems	7900HT Real-Time PCR System	96 x 0.2ml Std		✓							✓
Applied Biosystems	ABI PRISM 7000 SDS	96 x 0.2ml			✓				✓		
Applied Biosystems	ABI PRISM 7700 SDS	96 x 0.2ml			✓				✓		
Applied Biosystems	StepOnePlus Real-Time PCR	96 x 0.1ml			✓				✓		
Applied Biosystems	StepOne Real-Time PCR System	48 x 0.2ml									
Applied Biosystems	ViiA 7 Real-Time PCR System	384-well									
Applied Biosystems	ViiA 7 Real-Time PCR System	96 x 0.1ml			✓				✓		
Applied Biosystems	ViiA 7 Real-Time PCR System	96 x 0.2ml			✓				✓		
Bioneer	Exicycler 96	96 x 0.2ml			✓				✓		
Bio-Rad Laboratories	CFX384 Real-Time PCR System	384 microplate									
Bio-Rad Laboratories	CFX96 Real-Time PCR Detection	96 x 0.2ml			✓				✓		
Bio-Rad Laboratories	CFX96 Real-Time PCR Detection	Chromo4 96 x 0.2			✓				✓		
Bio-Rad Laboratories	DNA Engine Dyad	Chromo4 96 x 0.2			✓				✓		
Bio-Rad Laboratories	DNA Engine Dyad Disciple	Chromo4 96 x 0.2			✓				✓		
Bio-Rad Laboratories	DNA Engine Tetrad 2	Chromo4 96 x 0.2			✓				✓		
Bio-Rad Laboratories	iQ Real-Time PCR	96 x 0.2ml			✓				✓		
Bio-Rad Laboratories	iQ5 Real-Time PCR	96 x 0.2ml			✓				✓		
Bio-Rad Laboratories	iQ5 Real-Time PCR	48-12 12 x 0.5									
Bio-Rad Laboratories	MiniOpticon	48-12 48 x 0.2									
Bio-Rad Laboratories	MyiQ Real-Time PCR	96 x 0.2ml			✓				✓		
Bio-Rad Laboratories	Opticon 2	96 x 0.2ml			✓				✓		
Cepheid	SmartCycler @ System	16 reaction sites									
Cepheid	SmartCycler @ System	8 reaction sites									
DNA Technology	TC 9443	32 x 0.2ml									
DuPont Qualicon	BAX System Q7	96 x 0.2ml			✓				✓		✓
Eppendorf	Mastercycler ep realplex	96 x 0.2ml			✓				✓		
Eppendorf	Mastercycler ep realplex Silver	96 x 0.2ml			✓				✓		
Esco	Swift Spectrum 48 Real	48 x 0.2ml									
Esco	Swift Spectrum 96 Real Time	96 x 0.2ml			✓				✓		
Illumina	Eco Real-Time PCR System	48 x 25µl									
MJ Research Inc.	Opticon 2 System	96 x 0.2ml			✓				✓		
MJ Research Inc.	Opticon System	96 x 0.2ml			✓				✓		
MJ Research Inc.	PTC-200 DNA Engine	Chromo4 96 x 0.2			✓				✓		
MJ Research Inc.	PTC-220 DNA Engine Dyad	Chromo4 96 x 0.2			✓				✓		
MJ Research Inc.	PTC-221 DNA Engine Disciple	Chromo4 96 x 0.2			✓				✓		
MJ Research Inc.	PTC-225 DNA Engine Tetrad	Chromo4 96 x 0.2			✓				✓		
MJ Research Inc.	PTC-240 DNA Engine Tetrad 2	Chromo4 96 x 0.2			✓				✓		
Roche	LightCycler® 480 systems qPCR	384-well									
Roche	LightCycler® 480 systems qPCR	96 x 0.2ml	✓				✓				✓
Stratagene	Mx3000	96 x 0.2ml			✓				✓		
Stratagene	Mx3005P	96 x 0.2ml			✓				✓		
Stratagene	Mx4000	96 x 0.2ml			✓				✓		
Biometra	TOptical	96 x 0.2ml			✓				✓		
Xian Tianlong Science Tech.	TL988 Real-time PCR	36-48 36 x 0.2									
Xian Tianlong Science Tech.	TL988 Real-time PCR	36-48 48 x 0.2									



(registered) Trademarks and Owner: ABI Prism 5700, 700, 7000, 7700 and 7900 owner The Perkin Elmer Corp.; Abbot, M2000rt owner Abbot Corp.; Opti-Seal BIOplastics (logo), EU, BIOplastics owner BIOplastics BV; Analytik-Jena, FlexCycler owner Analytik-Jena; CEQ owner Beckman; Corbett Research, PalmCycler owner Corbett Research; Dupont, BAQ Q7 owner Dupont Corp.; Eppendorf, MasterCycler owner Eppendorf AG; LightCycler owner Roche; MegaBACE owner GE Healthcare; Mx3000, Mx3000P, Mx3005P, Mx4000 owner Stratagene; Opticon, iCycler iQ, iCycler, iQ5 owner Bio-Rad laboratories Inc.; Quantica owner Techné Ltd; StepOne, Veriti owner Applied Biosystems or its subsidiaries; Thermo Hybaid owner Thermo Corp.; Wave owner Transgenomics